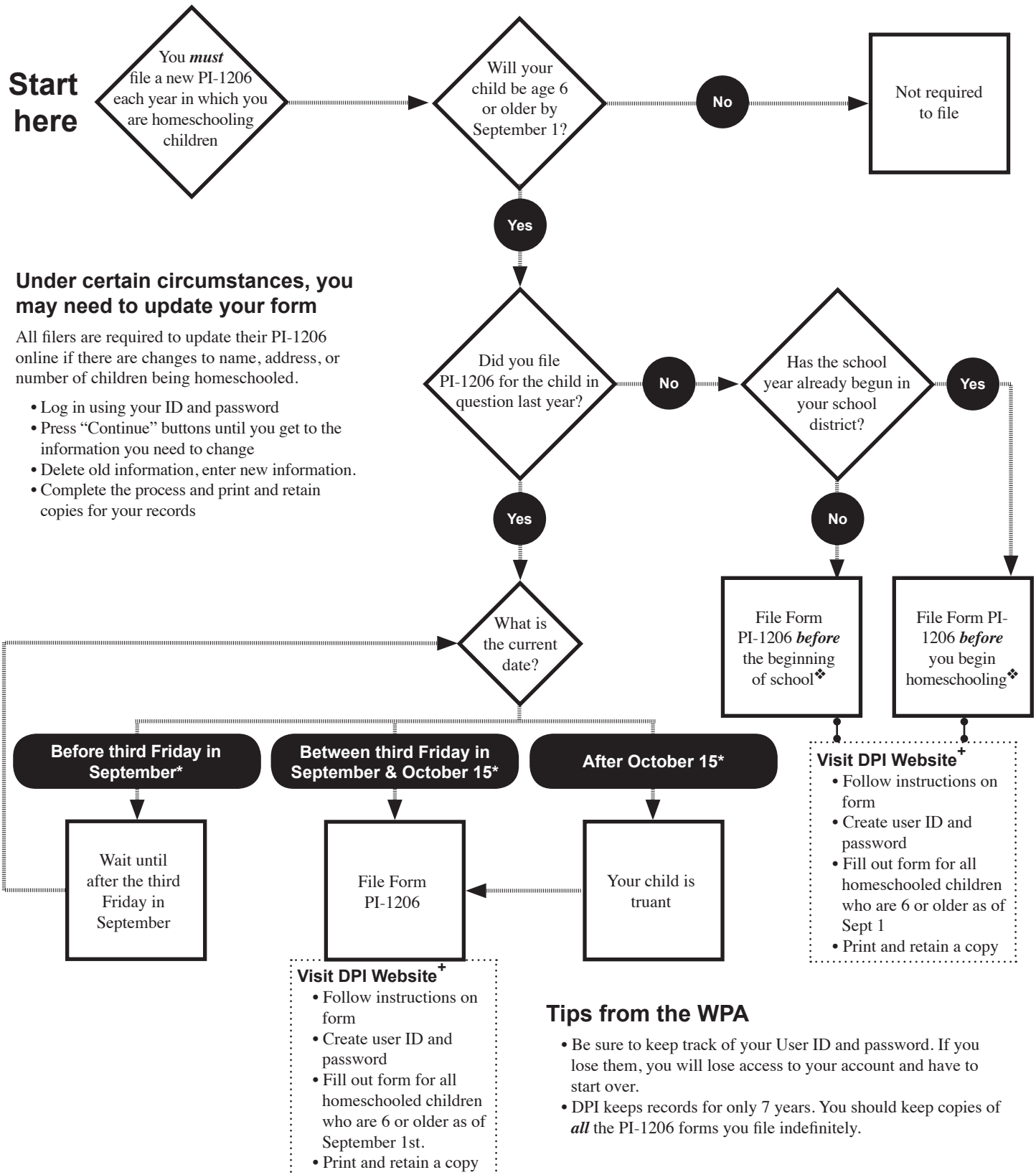


When and How to File the Form PI-1206

For more detailed instructions visit www.homeschooling-wpa.org.



*Public and private schools are required to report attendance as of the third Friday in September. Your homeschool is classified as a private school for this purpose. It is to your advantage to submit your attendance (via form PI-1206) on the same schedule as other private schools.

⁺Convenient click-through from WPA website, or access directly at <https://apps4.dpi.wi.gov/homeschoolparent/>

❖ Perform the following actions— 1: Inform principal that you are homeschooling. 2: Ask that your child be removed from attendance rolls.

3: Ask principal to sign and date a copy of your PI-1206 for your records. These actions are not necessary if you are filing for the first time because this is the first year in which your child was 6 by the cutoff date.